



**EXCELLENCE
BEYOND
EXPECTATIONS..!!**

COMPANY PROFILE

ABOUT US :

Infinova Technocast Pvt. Ltd. has been formed by Shreeji Developers with the aim to satisfy the specific requirement and increasing demand of client by providing best quality of Investment Casting. The company has been established in year 2018 to manufacturer steel and alloy steel Investment Castings. We are opening our wings across the national and international market with strong foundation and vast experience.

Infinova Technocast Pvt. Ltd. is spread out in 3000 sq. meter with the capacity of 600 MT per annum and well equipped with advanced Measuring, Monitoring, Controlling, and Testing facilities to ensure client's satisfaction at each task. The Company is producing quality investment castings with the active involvement of management and continues efforts of dedicated team having vast experience.

Infinova Technocast Pvt. Ltd. understands that the reputation of a company is dependent upon the quality of its products. In order to satisfy customers, we are working towards perfection through a Quality, Time bound supply along with competitive prices that differentiate us as a key player.

Infinova Technocast Pvt. Ltd. is committed to offer its clients with nothing less than the best in terms of quality and performance. we strongly believes, that the friendship and trust given by our customers is the great treasure we have. We fully consider our customers as an integral and important part of our business and constantly Endeavour to strengthen relationships with our customers by offering world class quality products at competitive price and outstanding service.

WHY US :

- Ultramodern Infrastructure
- Qualified and Experienced Team
- All The Processes are In House
- Updated Technologies

PROCESS CAPABILITIES :

MATERIAL OFFERED:

Carbon Steel, Austenitic Stainless Steel, Super Duplex Steel, Low Alloy Steel, Martensitic Steel, Nickel Based Alloys, Hardening Steel, Copper Base Alloys.

SURFACE ROUGHNESS:

4 to 6 Microns Ra

NDT FACILITIES:

Liquid penetrant test, Radiography test, Ultrasonic test, Magnetic particle test

JOB HANDLING CAPACITY:

Weight : 50 Gms to 120 Kg as a single piece
Size : 600mm X 600mm X 500mm

STANDARDS WE FOLLOW:

VISUAL

MSS-SP-55,
ASTM A997

DIMENSION

VDG P690 D1 Accuracy,
IS 11166 ClassII

FACILITIES



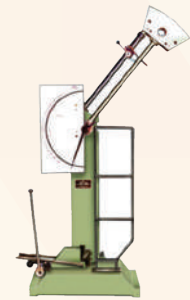
**Spectrometer
With Fe, Ni, Cu**



**UTM
With Extensometer**



**Brinell Hardness
Testing Machine**



**Impact
Testing Machine**

LIST OF MACHINES

NO	DESCRIPTION	MAKE	QTY
01	Wax Injection Press (Auto)	PMP	01
02	Wax Injection Press	Mayur	03
03	Wax Preparation Tank	Mayur	03
04	Centralize Wax Filling System	Mayur	01
05	Wax Extrusion Press	Mayur	01
06	Jar Mill	Mayur	01
07	Slurry Coating Drum	Mayur	03
08	Rainfall Sander	Mayur	01
09	Fluidized Sand Bed	Mayur	03
10	Dust Collector	Mayur	01
11	Dehumidifier	Power	01
12	Central AC Plant 16.5 Ton	Bluestar	02

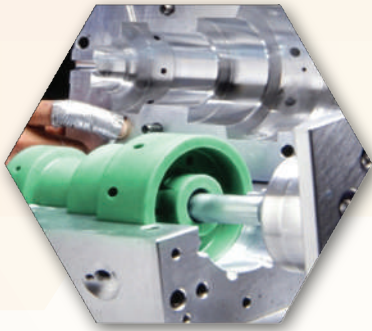
NO	DESCRIPTION	MAKE	QTY
13	Auto Clave	Radar	01
14	Induction Furnace With Crucible	Inductotherm	01
15	Shell Backing Furnace	Mayur	01
16	Vibrating Knockout	Mayur	01
17	Heat Treatment Furnace	Kpt	01
18	Shot Blasting Machine	Surface	01
19	Sand Blasting Machine	Mayur	01
20	Hydraulic Press For Coining	Pmp	01
21	Air Compressor	Deep	01
22	Drill Machine	Parth	01
23	Lathe Machine	Parth	01
24	Grinder Bench & Belt	Amber	02

INSPECTION & TESTING EQUIPMENTS

NO	DESCRIPTION	MAKE	QTY
01	Optical Emission Spectrometer	ARL	01
02	Utm (Digital)	FIE	01
03	Electronic Extensometer	FIE	01
04	Computerize Hardness Tester	Saroj	01
05	Impact Testing Machine	FIE	01
06	Surface Plate	Luthra	02
07	Digital Vernier	Insize	03

NO	DESCRIPTION	MAKE	QTY
08	Digital Height Gauge	Mitutoyo	02
09	Digitak Vernier	Mitutoyo	02
10	Bevel Protector	Yamayo	01
11	Combination Set	Yamayo	01
12	Sleep Gauge Set	Yamayo	01
13	Radiation Meter	Gamma	01
14	X-ray Viewer	East West	01

PROCESS



WAX PATTERN INJECTION :

Liquid wax injected into a molding die having the desired shape of final product for making wax pattern.

WAX PATTERN ASSEMBLY :

The wax patterns are allied with gate, runner, pouring cup and struts according to the size and shape of the pattern.

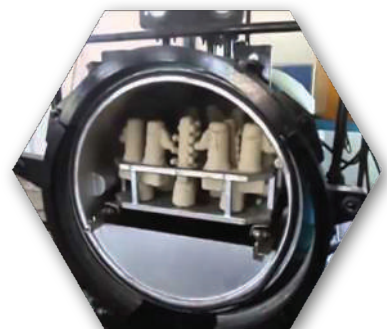


COATING :

Ceramic coatings applied in the wax pattern assembly, The most important stage of the coating process is the primary coating, where a very fine grade of sand is used to get casting with excellent surface finish.

DEWAXING :

Wax pattern assembly with number of coatings converted into shell after de-waxing, wax inside the solid ceramic coating being removed in liquid form with applying pressurized steam, steam pressure and cycle time are very critical parameters to be controlled during the de-waxing.



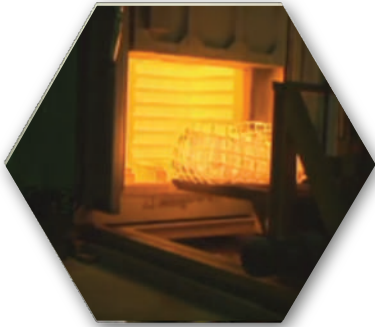
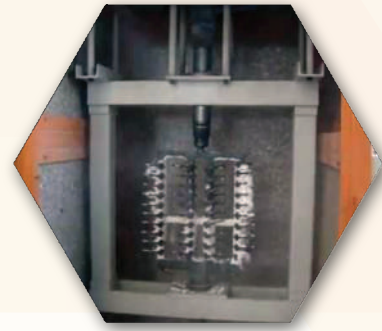
MELTING :

The shells are preheated to remove moisture content and residual wax from the shell and to sinter the ceramic of shell.

The specified grade melted in induction furnace is poured into pre-heated shells and shells are left for solidification.

KNOCKOUT & CUTTING :

The ceramic shell is broken off by vibrating knockout machine and individual casting are cut away by arc welding or gas cut off method.



HEAT TREATMENT :

Heat treatment for improving mechanical properties and to get proper microstructure results.

We have batch type furnace with rapid quenching facility, Furnace is calibrated according to API 6D and there is systemized control for real time temperature of different zones.

FETTLING :

We do fettling for removing of excess in gates and to finish final product with Abrasive grinding and final surface finish with greet shot blasting, Electropolishing or as per customers requirement.



FINAL INSPECTION :

Inspection is the most important part of engineering processes.

We do inspection of each batch with respective drawing, required instruments and gauges to insure customer requirements.

FINAL PACKING :

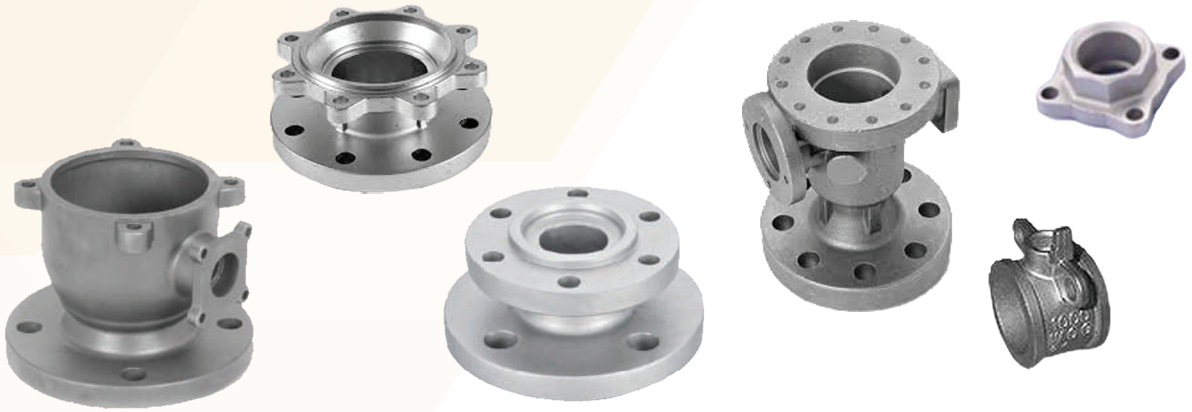
Final products are packed in wooden box or as per requirements of customers.

We apply rust preventive oil castings of carbonsteel to avoid rust.



PRODUCTS

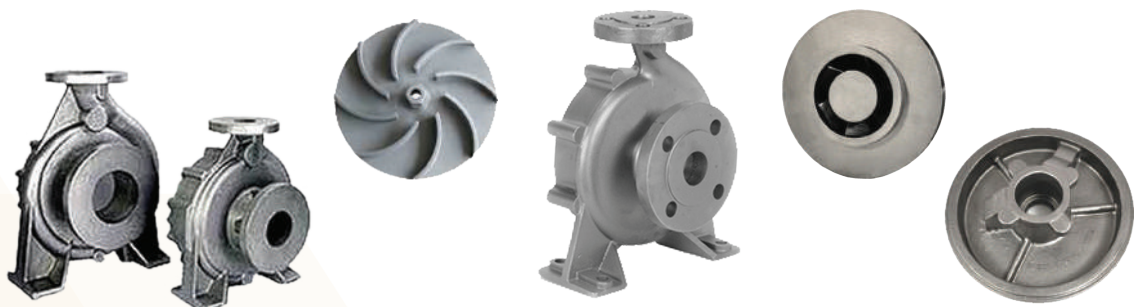
BALL VALVES



GLOBE VALVES

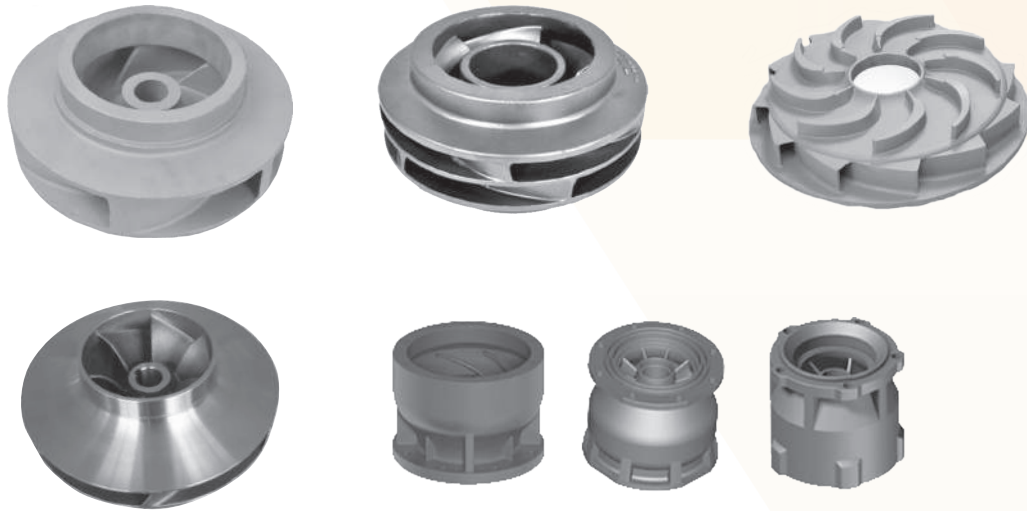


SINGLE STAGE PUMPS



PRODUCTS

MULTI STAGE PUMP



AUTOMOBILE



GENERAL ENGINEERING





Office & Works Address :

Plot No. 1 to 6, Jay Industrial Area,
Sr. No. 73/P, B/H Vandheshwar Temple,
Gondal Highway NH 27,
Bhunava - 360 311, Tal. Gondal,
Dist. Rajkot , Gujarat (India)

Contact details :

E-Mail: info@infinovatechnocast.com
sales@infinovatechnocast.com
Website: www.infinovatechnocast.com
Cell No.: +91-90990 51251
+91-90990 51651